



Check Processing, Electronic Refund,  
Document Enhancement, Web Enabled Reporting

## **MAPS Firefox Implementation Guide**

*Document Version 2.0*

*Last Updated 5/20/2010*

# Table of Contents

---

Introduction ..... 3

Download and Install Extension to Firefox ..... 4

# Introduction

The MAPS Applications (Argos, IntelCheck, FormFusion, MAP Server Configuration) use ActiveX to load a cab file on the client machine to launch the applications. ActiveX is a Microsoft product that is installed with Internet Explorer. ActiveX is not natively supported in Mozilla Firefox; therefore software extensions to the browser are required for it to work with MAPS.

The software extensions are developed by third parties and are not supported or endorsed by Evisions. This information is provided solely as a convenience to you and not as an endorsement by Evisions of the developer or content of the software extensions.

Evisions assumes no responsibility for adverse effects that could arise due to the installation of the software extensions.

This document outlines the steps required to install extensions to Mozilla Firefox so it will function with MAPS applications.

It must be noted that although this document describes how to use Mozilla Firefox with MAPS, Evisions products are designed and tested to work only with Microsoft Internet Explorer; therefore only limited support will be provided for issues with other browsers.

We encourage you to inform us of any errors you may find in this guide. We also ask that you forward suggestions that would make this document more relevant and understandable. We listen to our users, and we strive to improve our literature and products. Feedback can be sent to [support@evisions.com](mailto:support@evisions.com) or via <http://helpdesk.evisions.com>.

# Download and Install Extension to Firefox

You will need to download and install an Add-on to Firefox that allows selected sites to use Embedded Internet Explorer.

To get started, launch Firefox and navigate to

<http://addons.mozilla.org/en-us/firefox/addon/92382> (for Firefox version 3.6)

<http://addons.mozilla.org/en-us/firefox/addon/1419> (for older versions of Firefox)

The following example shows the configuration process for Firefox 3.6 but the process for older versions of Firefox is the same.

After entering the appropriate URL, the Add-ons for Firefox page will be displayed as shown in the figure below.

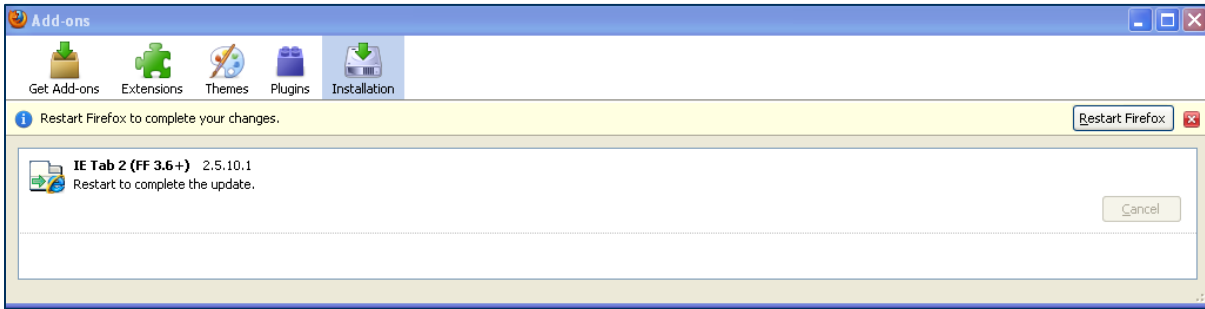


Click the green **Add to Firefox** button shown in the figure above.



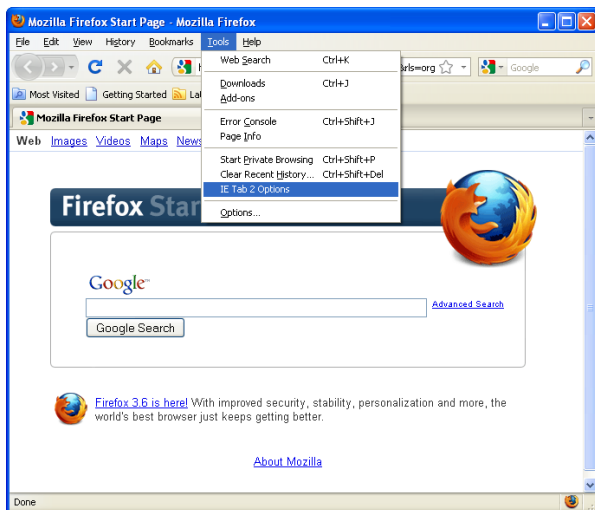
Click the **Install** button to continue.

Once the installation completes, you will need to shut down Firefox by closing all of your existing Firefox windows or selecting the **Restart Firefox** button at the right of the Add-ons Dialog Box.



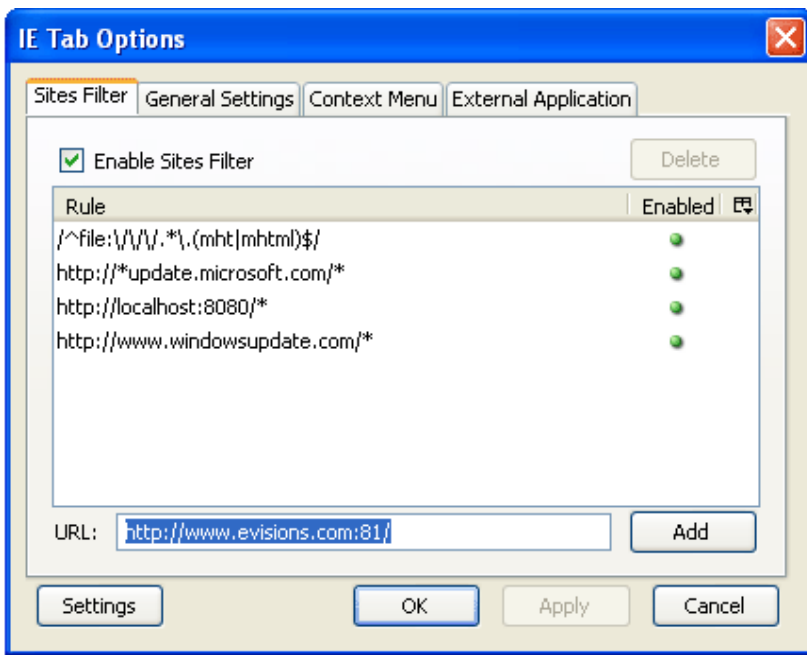
Now that the IE extension is installed, you need to add the sites that will use this extension.

Open a Firefox browser and go to **Tools->IE Tab Options** or **Tools/Add-ons**.



In the IE Tab Options Dialog Box shown below, enter the address of your MAP server in the URL field, and select the **Add** button

Make sure that the **Enable Sites Filter** box is checked and an asterisk (\*) is placed at the end of the URL.



Click the OK button to complete the configuration.

Your MAPS applications will now work within Mozilla Firefox. If you have any questions, please contact the Evisions HelpDesk.